



Dear Fellows and Friends of the GSBC,

With this GSBC newsletter, we continuously want to inform you about current developments at the Graduate School "Human Behaviour in Social and Economic Change" (GSBC), upcoming courses, workshops and conferences as well as research highlights relevant for researchers and doctoral candidates in the GSBC. We start our newsletter series with an issue designed to inform you about the why, who and when of the GSBC. The contents of this first newsletter are as follows:

- 1. The Graduate School "Human Behaviour in Social and Economic Change"**
- 2. Homepage, Online Registration and Calendar of Events**
- 3. Study Programme in Summer Term 2008**
- 4. Grand Opening**
- 5. Miscellaneous**

All announcements (especially of publications and lectures) are based on information supplied to us.

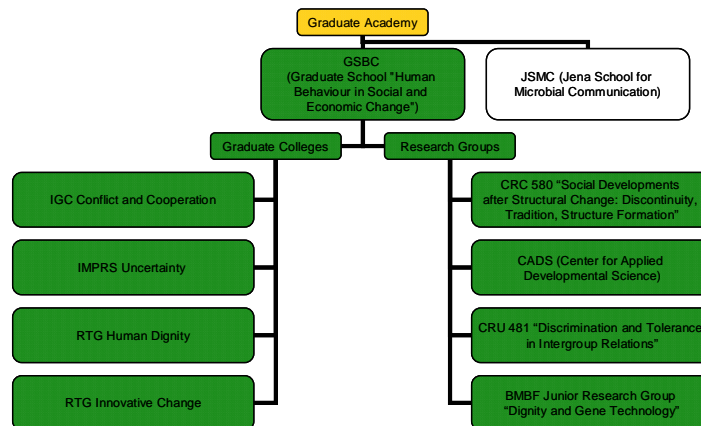
1. The Graduate School "Human Behaviour in Social and Economic Change"

The institution, participating disciplines and research focus

The Graduate School "Human Behaviour in Social and Economic Change" (GSBC) is a recently established university institution located at the Friedrich-Schiller-University Jena. It is a joint initiative of leading scholars of the Faculty of Social and Behavioural Sciences, the Faculty of Economics and Business Administration, and the Max Planck Institute of Economics. Currently, the major contributing disciplines are Applied Ethics, Economics, Psychology and Sociology. Their common research topic within the GSBC is the analysis of human behaviour with an emphasis on the initiation of, and the adaptation to, change in the social and economic spheres. Each discipline aims at different aspects and levels of analysis, ranging from the individual, the social group and organisation to the social and economic systems.

The principal research focus of the GSBC is interdisciplinary, in line with our conviction that answers to research problems related to social and economic change will definitely benefit from insights offered by neighbouring disciplines. An existing lacuna in a sometimes restricted disciplinary solution can thus often be closed. Our preference for an interdisciplinary approach, however, does not deny the disciplinary strengths in identifying problems and suggesting promising solutions. Some broader research fields currently addressed by the GSBC faculty are

- Responses to accelerated change
- Innovation as intended change
- Changing social and economic contexts and changing identities
- Change across the life span



The embracing concept of the Graduate School

The general objectives of the GSBC are education to excellence and the encouragement of outstanding research by providing a framework for doctoral programmes in the social sciences, based on top-quality international standards.

The research orientation of the GSBC is evidenced by a number of highly rated research consortia and research projects. As to the former, the following are of major importance:

- DFG CRC 580: Collaborative Research Centre ("Sonderforschungsbereich") "Social Developments after Structural Change: Discontinuity, Tradition, Structure Formation" (Sociology, Psychology, Political Science, Economics, Law and History)
- DFG CRU 481: Collaborative Research Unit ("Forscherguppe") "Discrimination and Tolerance in Intergroup Relations" (Psychology and Communication Science)
- Center for Applied Developmental Science (CADS) (Psychology)
- BMBF Junior Research Group "Dignity and Gene Technology" (Ethics)

Currently, the GSBC comprises the following four graduate colleges (hereafter called GC), financed either by the German Research Foundation (DFG) or the Max Planck Society:

- Conflict and Cooperation (DFG-IRTG* 622)
- Human Dignity (DFG-RTG 1402)
- Innovative Change (DFG-RTG 1411)
- Uncertainty (IMPRS**)

A total of about 115 doctoral candidates are enrolled in the four GCs; they are also automatically members of the GSBC. Membership, which is free with no additional requirements attached, opens up further opportunities for interdisciplinary education, discussion and advice:

- The GSBC enables doctoral candidates to follow not only their own programmes but also benefit from the courses, lectures, summer schools, etc., of the other programmes. In principle, the programmes of all four GCs are therefore open to all candidates of the GSBC. At present, we are developing a credit point system,

* International Research Training Group

** International Max Planck Research School

allowing to evaluate the courses and seminars of other GCs and to credit successful completion of a candidate's own GC. This open-door approach is explicitly intended to further interdisciplinary research and discussion.

- The GSBC puts much emphasis on the interaction among the candidates, not only discipline-oriented regarding their own programmes, but also on an interdisciplinary level, that is, crossing the boundaries of the GCs. Such interaction allows discussing research problems and exchanging methodological solutions and tools easily and effectively.

On this basis, the GSBC aims to strengthen the candidates' disciplinary knowledge and competences and complement these with studies in neighbouring disciplines. In doing so, the GSBC currently relies on the four GCs mentioned. However, another GSBC objective is to promote the inclusion of additional GCs and, in this way, increase the number of disciplines involved in the GSBC. In this context, one new programme advised by the GSBC has recently been set up and submitted for funding.

The broader GSBC framework I: Jena Graduate Academy

The Jena Graduate Academy was established in June 2006 to create a high standard research environment for doctoral candidates of all disciplines. 'Early stage researchers' are prepared for their professional careers in science, business and society. The Graduate Academy offers the following opportunities and study programmes to doctoral and post doctoral candidates:

- Attractive study programmes combining disciplinary and interdisciplinary topics
- Specially tailored courses in transferable skills
- Language classes (German and scientific English)
- Individual academic advice and information
- Support for international early stage researchers
- Support for early stage researchers with children

Currently, two pilot schools are members of the Jena Graduate Academy. The Graduate School "Human Behaviour in Social and Economic Change" (GSBC) serves as the pilot school for the social and behavioural sciences, economics and humanities; the Jena School "Microbial Communication" (JSMC) serves as the pilot school for mathematics and the natural and life sciences.

The broader GSBC framework II: FSU Research Major „Menschen im Sozialen Wandel“

The activities and research initiatives of the GSBC have to be seen in the wider context of the research majors of the Friedrich-Schiller-University. Regarding the majors, it is "Menschen im Sozialen Wandel" (Humans Facing Social Change) to which the GSBC has been assigned, serving as core coordinating body and pursuing the following objectives:

- The first objective is to identify and coordinate research both at the FSU and with other cooperating universities and research institutes devoted to the broad topics of humans, their behaviour and the interdependencies in view of social change. The approach will thus be interdisciplinary and monitor or address a broad range of fields and disciplines of both the social and natural sciences.
- Linked to this is the second important objective which aims to develop excellent disciplinary and interdisciplinary research programmes and projects (such as CRCs, research consortia, other externally funded research projects, networks of excellence, etc.) and thereby attract highly rated external funding from the DFG, the EU, among

others. Especially those disciplines not yet represented in the GSBC and its framework are invited to cooperate.

- The third and last objective is to create a nationally and internationally highly competitive "research hard- and software" for the analysis of humans facing social change. Based on this infrastructure, it is planned to submit an application to the 2nd round of the German "Excellence Initiative" in 2011.

2. Homepage, Online Registration and Calendar of Events

The GSBC homepage (www.gsbc.uni-jena.de) serves to provide core information. Besides continuously up-dated information on research output, faculty and up-coming events, the most important features are the calendar of events and the possibility of online registration for the courses of the GCs.

On the GSBC homepage, doctoral candidates can access events either in listed form (see also bullet point 3: Study Programme in Summer Term 2008) or in calendar form. An example is the calendar for March 2008 below:

The screenshot shows the 'Study Programme' section of the Jena Graduate School website. It includes a navigation menu on the left with links for Home, Graduate School, Study Programme, Calendar of Events, Overview and Structures, Activities, Login/Logout, Admission, Downloads, Directions, Archive, and Contact. The main content is a calendar for March 2008, with a sidebar for navigating between months from May 2007 to May 2008. The calendar grid lists various events such as seminars, internal MPI meetings, and workshops, with specific dates and times provided for each.

For the current calendar of events, please visit our homepage (<http://gk.wiwi.uni-jena.de/index.php?GSBC=1>). The calendar covers the events of all GCs. All announcements are linked to detailed information about individual events.

Further, the homepage enables doctoral candidates to register on line for courses, and faculty to check the registrations. To register you need a login: click the link Study Programme - Login/Logout and then continue to link: [Not a member yet? Click here to register.](#)

After the registration process you will receive a welcome mail. You can then log in and register for courses. The registration is binding, and doctoral candidates may not cancel after registering for a certain course. An overview of the courses you registered for is also provided.

3. Study Programme in Summer Term 2008

	Title	Speakers
Methodo- logical courses	Advanced Econometrics	Kirchkamp, O.
	Experimental Contests	Kirchkamp, O.
	Computational Economics	Krüger, J.
	Auction Theory	Kirchkamp, O.
Theoretical courses	Industrial Dynamics	Cantner, U.
	Topics in Empirical Innovation Economics	Kleinknecht, A.
	Person Perception Research Seminars	Schweinberger, S.
	Economics of Innovation	Cantner, U.
	Information and Communication Technology and Economic Growth	van Beers, C.
	Innovation Systems	Werker, C., Fritsch, M.
	Collective Action and Prejudice Reduction: Con- tradictions and Solutions	Wright, S.
	The Social Psychology of Power	Simon, B.
	Implicit Measures of Attitudes: What They Measure	Rothermund, K.
	Evolutionary Approaches to Inter-Group Phe- nomena	Kessler, T.
Human Development in Times of Social Change	Silbereisen, R.K., Toma- sik, M.	
Democracy in Transformation Societies: The Post-Communist Experiences	Best, H., Edinger, M.	
Work -shop	Die Begründung von Menschenrechten	Knoepffler, N., Gröschner, R.
Thesis work- shop	Colloquium RTG "Human Dignity and Human Rights"	Leppin, V., Gröschner, R., Knoepffler, N., Leiner, M., Marx, G.
Sum- mer School	2nd Jena Summer Academy on "Innovation and Uncertainty"	IMPRS Uncertainty and GC Innovative Change

4. Grand Opening

On May 19, 2008, the opening ceremony of the Graduate School "Human Behaviour in Social and Economic Change" will take place at the historic Dornburg Castle. Below please find the preliminary programme.

- 13.30 - 15.45** Welcome Address and Introduction to the Research Topics of the Graduate Colleges
- 15.45 – 16.15** Coffee Break and Posters Session of Doctoral Candidates
- 16.15 - 17.45** Commemorative Speeches
- 18.30 - 20.00** Reception and Buffet

All GSBC members are cordially invited! Please note that there will be a bus transfer from Jena to Dornburg Castle and back. The departure time will be announced in time.

5. Miscellaneous

Recent Publications by GSBC Members:

- Agarwal, R., Audretsch, D.B. & Sarkar MB, The Process of Creative Construction: Knowledge Spillovers, Entrepreneurship and Economic Growth, Jena Economic Research Papers, 2008-008.
- Antony, J. & Grebel, T., Technology Flows between Sectors and its Impact on Large-Scale Firms, Jena Economic Research Papers, 2008-016.
- Berninghaus, S., Bleich, S. & Güth, W., Wage Flexibility in Ongoing Employment Relations – An Experiment with a Stochastic Labor Market, in: Franz, W., Ramser, H.J., Stadler, M. (eds.), *Schriftreihe des Wirtschaftswissenschaftlichen Seminars Ottobeuren*, Mohr Siebeck: Tübingen (in press).
- Berninghaus, S., Güth, W. & Kirstein, A., Trading Goods versus Sharing Money – An Experiment Testing Whether Fairness and Efficiency are Frame Dependent, *NeuroPsychoEconomics* (in press).
- Berninghaus, S., Güth, W. & Vogt, B., Spontaneous Evolution of Social Exchange – An Experimental Study, *Journal of Socio-Economics* (in press).
- Berninghaus, S., Güth, W., Hoppe, C. & Paul, C., International Competition in Hiring Labor and Selling Output: A Theoretical and Experimental Analysis, in: Franz, W., Ramser, H.J., Stadler, M. (eds.), *Schriftreihe des Wirtschaftswissenschaftlichen Seminars Ottobeuren*, Mohr Siebeck: Tübingen (in press).
- Bianchi, M., Machunsky, M., Steffens, M. & Mummendey, A., It's me: I'm German and I'm European. Is Ingroup Projection just Social Perception?, *Experimental Psychology* (in press).
- Bindemann, M., Burton, A.M., Leuthold, H. & Schweinberger, S.R., Brain potential correlates of face recognition: Geometric distortions and the N250r brain response to stimulus repetitions, *Psychophysiology* (in press).
- Boysen, N., Fliedner, M. & Scholl, A., Assembly line balancing: Which model to use when?, *International Journal of Production Economics* 111 (2008), 509-528.

- Brennan, G., González, L., Güth, W. & Levati, M.V., Attitudes toward Private and Collective Risks in Individual and Strategic Choice Situations, *Journal of Economic Behavior and Organization* (in press).
- Brennan, G., Güth, W. & Kliemt, H., Approximate Truth in Economic Modelling, *Homo Oeconomicus* (in press).
- Buchner, A., Bell, R., Rothermund, K. & Wentura, D., Sound source location modulates the irrelevant sound effect, *Memory and Cognition* (in press).
- Burton, A.M., Bindemann, M., Langton, S.R.H., Schweinberger, S.R. & Jenkins, R., Gaze perception requires focused attention: evidence from an interference task, *Journal of Experimental Psychology: Human Perception and Performance* (in press).
- Cantner U. & Krüger, J.J., Micro-Heterogeneity and Aggregate Productivity Development in the German Manufacturing Sector - Results from a Decomposition Exercise, *Journal of Evolutionary Economics* (in press).
- Cantner U., Gaffard, J.L. & Nesta, L., Schumpeterian Perspectives on Innovation, Competition and Growth, *Special Issue Journal of Evolutionary Economics* (in press).
- Cantner U., Graf H. & Meder, A., Urbane Innovationssysteme als kollektive Innovationsprozesse, in: A. Ebner & K. Heine (eds.), *Innovation zwischen Markt und Staat, Nomos* (in press).
- Cantner U., Innovation Competition, in: U. Cantner, A. Greiner, T. Kuhn & A. Pyka, *Futurity and Economics*, Edward Elgar (in press).
- Cantner U., Krüger, J.J. & von Rhein, K., Knowledge and Creative Destruction over the Industry Life Cycle - The Case of the German Automobile Industry, *Economica* (in press).
- Cantner, U. & Meder, A., Regional and technological effects of cooperation behaviour, *Jena Economic Research Papers*, 2008-014.
- Cantner, U., Joel, K. & Schmidt, T., The Use of Knowledge Management by Innovators - Empirical Evidence for Germany, *Jena Economic Research Papers*, 2008-002.
- Corrocher, N. & Guerzoni, M., Product variety and price strategy in the ski manufacturing industry, *Jena Economic Research Papers*, 2008-015.
- Degnerm J., Meiser, T. & Rothermund, K., Stereotype und Vorurteile als Basis von Diskriminierung: Eine sozialkognitive Sicht, in: Beelmann, A. & Jonas, K. (eds.), *Diskriminierung und Toleranz: Psychologische Grundlagen und Anwendungsperspektiven* (in press).
- Dobel, C., Geiger, L., Bruchmann, M., Putsche, C., Schweinberger, S.R. & Junghöfer, M., On the interplay between familiarity and emotional expression in face perception, *Psychological Research* (in press).
- Eder, A. & Rothermund, K., When do motor behaviors (mis)match affective stimuli? An evaluative coding view of approach and avoidance reactions, *Journal of Experimental Psychology: General* (in press).
- Fischer, S., Güth, W. & Köhler, C., Effects of Profitable Downsizing on Collective Bargaining, *Jena Economic Research Papers*, 2008-011.
- Freytag, A. & Pehnelt, G., Debt Relief and Changing Governance Structures in LDCs by, *World Development* (in press).
- Freytag, A. & Wangler, L., Strategic Trade Policy as Response to Climate Change? The Political Economy of Climate Policy, *Jena Economic Research Papers*, 2008-001.

- Fritsche, I., Kessler, T., Mummendey, A. & Neumann, J., Minimal and maximal goal orientation and reactions to norm violations, *European Journal of Social Psychology* (in press).
- Giessner, S.R. & Mummendey, A., United we win, divided we fail? Effects of cognitive merger representations and performance feedback on merging groups, *European Journal of Social Psychology* (in press).
- Gleibs, I., Mummendey, A. & Noack, P., Predictors of changes in post-merger identification during a merger process: A longitudinal study, *Journal of Personality and Social Psychology* (in press).
- Goodin, R.E., Güth, W. & Sausgruber, R., When to Coalesce: Early versus Late Coalition Announcement in Experimental Democracy, *British Journal of Political Science* (in press).
- Güth, W. & Kliemt, H., The rationality of rational fools, in: *Rationality and Commitment*, Cambridge University Press (in press).
- Güth, W. & Ortmann, A., A Behavioral Approach to Distribution and Bargaining, in: M. Altman (ed.), *Foundations and Extensions of Behavioral Economics: A Handbook*, M.E. Sharpe (in press).
- Güth, W. & Sausgruber, R., Voting between Tax Regimes to Fund a Public Good, *Economics of Governance* (in press).
- Güth, W. & Tietz, R., Experimentelle Verhaltensforschung – Programm, Methodik und Resultate, in: C. Herrmann-Pillath & M. Lehmann-Waffenschmidt (eds.), *Handbuch der Evolutorischen Ökonomik*, Springer-Verlag (in press).
- Güth, W., Comment on M. Rauber and H. W. Ursprung 'Evaluation of Researchers: A Life Cycle Analysis of German Academic Economists', in: M. Albert (ed.), *Jahrbuch für Neue Politische Ökonomie* (in press).
- Güth, W., Kliemt, H. & Napel, S., Democratic Defenses and Destabilisations, in: M. Braham & F. Steffen (eds.), *Konferenzband 'Holler Konferenz Hamburg'*, Springer (in press).
- Güth, W., Levati, M.V. & Ploner, M., Is satisficing absorbable? An Experimental Study, *Journal of Behavioral Finance* (in press).
- Güth, W., Levati, M.V. & Ploner, M., On the social dimension of time and risk preferences: An experimental study, *Economic Inquiry* (in press).
- Güth, W., Levati, M.V. & Ploner, M., Social identity and trust – An experimental investigation, *Journal of Socio-Economics* (in press).
- Güth, W., Levati, M.V. & Ploner, M., The Impact of Payoff Interdependence on Trust and Trustworthiness, *German Economic Review* (in press).
- Güth, W., Levati, M.V., Koschmieder, K.-D. & Martin, E., How to preserve a fortune: An experimental comparison of foundations and direct transfers to the heir in: Hebig, M., Kaiser, K., Koschmieder, K.-D. & Oblau, M. (eds.), *Aktuelle Probleme der Unternehmensbesteuerung*, Festschrift für Prof. (em.) Dr. Wilhelm H. Wacker, Georg-August-Universität Göttingen (in press).
- Haase, C.M., Silbereisen R.K. & Reitzle M., Adolescents' transitions to behavioural autonomy after German unification, *Journal of Adolescence* (in press).
- Hasselhorn, M. & Silbereisen, R.K. (eds.), *Psychologie des Säuglings- und Kindesalters (Enzyklopädie der Psychologie, Serie V: Entwicklungspsychologie, Band 4)*, Hogrefe: Göttingen, 2008.

- Helm, R., Steiner, M., Scholl A. & Manthey, L., A comparative empirical study on common methods for measuring preferences, *International Journal of Management and Decision Making* 9 (2008), 242- 265.
- Hewig, J., Cooper, S., Trippe, R.H., Hecht, H., Straube, T. & W.H.R. Miltner, Drive for thinness and attention towards specific body part in a non-clinical sample, *Psychosomatic Medicine* (in press).
- Hewig, J., Cooper, S., Trippe, R.H., Hecht, H., Straube, T. & W.H.R. Miltner, Gender differences for specific body regions when looking at males and females, *Journal of Non-verbal Behavior* (in press).
- Hewig, J., Trippe, R.H., Hecht, H., Coles, M., Holroyd, C. & Miltner, W.H.R., An electrophysiological analysis of coaching in blackjack, *Cortex* (in press).
- Jonas, K.J. & Mummendey, A., Positive intergroup relations: From reduced outgroup derogation to outgroup support, in Wagner, U., Tropp, L. R., Finchiulescu, G. & Tredoux, C. (eds.), *Improving intergroup relations: Building on the legacy of Thomas F. Pettigrew*, Blackwell: Oxford (in press).
- Kessler, T. & Mummendey, A., Prejudice and intergroup relations, in: Hewstone, M., Stroebe, W. & Jonas, K. (eds.), *Introduction to social psychology: A European perspective* (4th ed., 2008), Blackwell: Malden, MA, 290-314.
- Krüger, J.J. & Dietrich, A., Long-Run Sectoral Development - Time Series Evidence for the German Economy, *Jena Economic Research Papers*, 2008-013.
- Krüger, J.J., Capacity Utilization and Technology Shocks in the U.S. Manufacturing Sector, *International Review of Applied Economics* (in press).
- Krüger, J.J., Productivity and Structural Change: A Review of the Literature, *Journal of Economic Surveys* 22 (2008), 330-363.
- Krüger, J.J., The Sources of Aggregate Productivity Growth: U.S. Manufacturing Industries, 1958-1996, *Bulletin of Economic Research* (in press).
- Langton, S.R.H., Law, A.S., Burton, A.M. & Schweinberger, S.R., Attentional capture of faces, *Cognition* (in press).
- Lessenich, S., *Die Neuerfindung des Sozialen. Der Sozialstaat im flexiblen Kapitalismus*, Transcript: Bielefeld, 2008.
- Machunsky, M., Meiser, T. & Mummendey, A., On the crucial role of the mental ingroup representation for ingroup bias and the ingroup prototypicality-ingroup bias link, *Experimental Psychology* (in press).
- Mahagaonkar, P., Corruption and Innovation: A Grease or Sand relationship?, *Jena Economic Research Papers*, 2008-017.
- Matthey, A., Yesterday's expectation of tomorrow determines what you do today: The role of reference-dependent utility from expectations, *Jena Economic Research Papers*, 2008-003.
- Mayer, A.-K. & Rothermund, K., Altersdiskriminierung, in: A. Beelmann & K. Jonas (eds.), *Diskriminierung und Toleranz: Psychologische Grundlagen und Anwendungsperspektiven* (in press).
- Pinquart, M. & Silbereisen, R.K., Entwicklung des Umweltbewusstseins über die Lebensspanne, *Umweltpsychologie* (in press).
- Pinquart, M. & Silbereisen, R.K., Socioemotional selectivity in cancer patients, *Psychology and Aging* (in press).

- Pinquart, M., Hoeffken, K., Silbereisen, R.K. & Wedding, U., Social support and survival in patients with acute myeloid leukaemia, *Supportive Care in Cancer* (in press).
- Pinquart, M., Nixdorf, J. & Silbereisen, R.K., Associations of age and cancer with individual goal commitment, in: C. Fisher & R. M. Lerner (eds.): *Applied Developmental Science: An encyclopedia of research, policies, and programs*, Sage: Beverly Hills (in press).
- Pinquart, M., Stotzka, C. & Silbereisen, R.K., Personality and ambivalence in decisions about becoming parents, *Social Behavior and Personality* (in press).
- Quadflieg, S., Mohr, A., Mentzel, H.J., Miltner, W.H.R. & Straube, T., Modulation of the neural network involved in the processing of anger prosody: The role of task relevance and social phobia, *Biological Psychology* (in press).
- Raabe, T., Titzmann, P.F. & Silbereisen, R.K., Freizeitaktivitäten bei jugendlichen Ausiedlern und Einheimischen, *Zeitschrift für Entwicklungspsychologie und Pädagogische Psychologie* 55 (2008), 39-50.
- Richter, M., Miltner, W.H.R. & Straube, T., Association between therapy outcome and right-hemispheric activation in chronic aphasia, *Brain* (in press).
- Rothermund, K. & Eder, A., Emotion und Handeln, in: V. Brandstätter & J. H. Otto (eds.), *Handbuch der Allgemeinen Psychologie: Motivation und Emotion*, Hogrefe: Göttingen (in press).
- Rothermund, K. & Mayer, A.-K., Altersdiskriminierung – Erscheinungsformen, Erklärungen und Interventionsansätze, Kohlhammer: Stuttgart (in press).
- Rothermund, K., Teige-Mocigemba, S., Gast, A. & Wentura, D., Eliminating the influence of recoding in the Implicit Association Test: The Recoding-Free Implicit Association Test (IAT-RF), *Quarterly Journal of Experimental Psychology* (in press).
- Rothermund, K., Voss, A. & Wentura, D., Attentional counter-regulation in affective processing: A basic mechanism that warrants flexibility in emotion and motivation, *Emotion* 8 (2008), 34-46.
- Schmitt-Rodermund, E. & Silbereisen, R.K., Immigrant parents' age expectations for the development of their adolescent offspring – Transmission effects and changes after immigration, in: Schoenpflug, U. (ed.) *Cultural transmission: Developmental, psychological, social, and methodological perspectives*, Cambridge University Press (in press).
- Schmitt-Rodermund, E. & Silbereisen, R.K., Well-adapted adolescent Ethnic German immigrants in spite of adversity – The protective effects of human, social, and financial capital, *European Journal of Developmental Psychology* 5 (2008), 186-209.
- Schoon, I. & Silbereisen, R.K. (eds.), *Transition from school to work. Globalisation, individualisation, and patterns of diversity* (in press).
- Sharma, D. & Silbereisen, R.K., Revisiting an era in Germany from the perspective of adolescents in mother-headed single-parent families, *International Journal of Psychology* (in press).
- Silbereisen, R.K. & Hasselhorn, M. (eds.), *Psychologie des Jugendalters (Enzyklopädie der Psychologie, Serie V: Entwicklungspsychologie, Band 5)*, Hogrefe: Göttingen, 2008.
- Silbereisen, R.K. & Weichold, K., Gesundheitsförderung und Prävention: Konsum illegaler Drogen, in: J. Bengel & M. Jerusalem (eds.): *Handbuch der Gesundheitspsychologie und Medizinischen Psychologie*, Hogrefe: Göttingen (in press).
- Stahl, J., Wiese, H. & Schweinberger, S.R., Expertise and own-race bias in face processing: An Event-related potential study, *NeuroReport*, 19 (2008), 583-587.

- Steffens, M.C., Jelenec, P. & Mecklenbräuer, S., Decomposing the memory processes contributing to enactment effects by multinomial modelling, *European Journal of Cognitive Psychology* (in press).
- Straube, T. & Miltner, W.H.R., Angststörungen, in: G. Schipek (ed.): *Neurobiologie der Psychotherapie*, Schattauer: Stuttgart & New York (in press).
- Straube, T., Schmidt, S., Weiss, T., Mentzel, H.J. & Miltner, W. H. R., Sex differences in brain activation to anticipated and experienced pain in the medial prefrontal cortex, *Human Brain Mapping* (in press).
- Straube, T., Schulz, A., Geipel, K., Mentzel, H.J. & Miltner, W.H.R., Dissociation between singing and speaking in expressive aphasia: The role of song familiarity, *Neuropsychologia* (in press).
- Teige-Mocigemba, S., Klauer, K.C., & Rothermund, K., Minimizing method-specific variance in the Implicit Association Test: A single-block IAT, *European Journal of Personality Assessment* (in press).
- Voss, A., Rothermund, K. & Brandtstädter, J., Interpreting ambiguous stimuli: Separating perceptual and judgmental biases, *Journal of Experimental Social Psychology* (in press).
- Weichold, K., Buettig, S. & Silbereisen, R.K., Effects of Pubertal Timing on Communication Behaviors and Stress Reactivity in Young Women during Conflict Discussions with their Mothers, *Journal of Youth and Adolescence* (in press).
- Weiss T., Hesse, W., Ungureanu, M., Hecht, H., Leistritz, L., Witte, H. & Miltner, W.H.R., How do brain areas communicate during the processing of noxious stimuli? An analysis of laser evoked event-related potentials using the Granger Causality Index, *Journal of Neurophysiology* (in press).
- Wentura, D. & Rothermund, K., Aufmerksamkeit und Gedächtnis, in: G. Stemmler (ed.), *Psychologie der Emotion (Enzyklopädie der Psychologie, Bd. C/IV/3)*, Hogrefe: Göttingen (in press).
- Wenzel, V., Weichold, K. & Silbereisen, R.K., Schultypspezifische Wirksamkeit eines Lebenskompetenzprogramms zur Beeinflussung des Tabakkonsums von Schülern in Gymnasien und Regelschulen, *Sucht* 53 (2008), 335-346.
- Wiese, H., Schweinberger, S.R. & Neumann, M.F., Perceiving age and gender in unfamiliar faces: Brain potential evidence for implicit and explicit person categorization, *Psychophysiology* (in press).
- Wiesner, M., Weichold, K. & Silbereisen, R.K., Effects of deviant peer association on adolescent alcohol consumption: A growth mixture modeling analysis, *Journal of Youth and Adolescence* (in press).

Upcoming Lectures:

- Asa Lindholm Dahlstrand (Halmstad University): *"Innovative Entrepreneurship: Creating Success by Linking Ideas and People"* on April 16, 2008 (16.15-17.45, MPI seminar room V14, Kahlaische-Str.10, Jena)
- Zakaria Babutsidze (MERIT): *"Learning to Consume, Consumer Skill Sharing and the Effects of Advertising"* on April 23, 2008 (16.00-17.30, MPI seminar room V14, Kahlaische-Str.10, Jena)
- Georg Licht (ZEW Mannheim): *"Do German Courts like Europeans more than Germans? - A comparison of infringement cases of patent application at the German and the European Patent Office"* on May 7, 2008 (16.15-17.45, Room 2.43, Department of Economics, Carl-Zeiss-Str.3, Jena)

Rolf Sternberg (Leibnitz-University Hannover): *"Entrepreneurship als 'regional event'"* on May 8, 2008 (17.30 - 19.30, University Aula, Main Building, Fürstengraben 1, Jena)

Vangelis Souitaris (Cass Business School, City University London): *"The effects of experience on licensing and spinning off from public research institutions. The case of Max Planck."* On May 21, 2008 (12.30 – 14.00, MPI seminar room V14, Kahlaische-Str.10, Jena)

Cees van Beers (Delft University): *"Impact of Mergers and Acquisitions on Innovation Behaviour of Firms"* on June 4, 2008 (12.30 – 14.00, Room 2.43, Department of Economics, Carl-Zeiss-Str.3, Jena)

If you have any questions or comments regarding our Graduate School, please do not hesitate to contact us directly:

Graduate School "Human Behaviour in Social and Economic Change"
Friedrich-Schiller-University Jena
Accouchierhaus, Jenergasse 8
07743 Jena, Germany
Phone: +49(0)3641-930410
Fax: +49(0)3641-930402
jenagraduate@uni-jena.de

Best Wishes,



Uwe Cantner (Director)

You can subscribe and unsubscribe this newsletter at <https://lc03.rz.uni-jena.de/mailman/listinfo/newsletter-gsbc>.
For comments or announcements in the next issue please contact Kristina von Rhein (<mailto:kristina.von-rhein@uni-jena.de>).